

Bushing for in-oil application FMB0m-250

Generally meets the requirements of C33-001 - C33-051 -C 66-555
EN 50180

Deadbreak operation - Rating 250 A
(Multipoint contact)

elascon
EC

formfit[®]

Medium Voltage (MV)

Up to 24 kV

MV separable connectors

Reference : FMB0m-250



INTERFACE
A / 250 A

Product Application and Design

Utilisation

- In-oil insulated equipment (transformers, switchgear,...).
- Indoor or outdoor installation.
- Insulation voltage up to 24 kV (Um).
- Continuous 250 A rms overload 300 A rms (8 hours per 24-hour period).
- Operated when de-energized.
- Interchangeable with 250 A porcelain bushings

Packing

Supplied as a kit of 3 pieces.

Shipping weight and volume (approx) of kit : 4,5 kg / 0,025 m³.

Other products

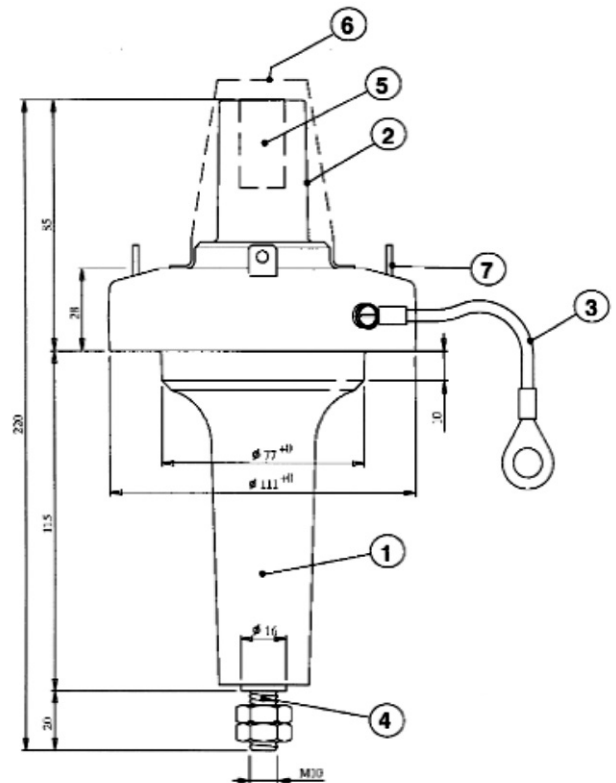
- Associated products such as separable connectors FMCS-250, FMCE-250, MSCS/EC-250, MSCE/EC-250 and accessories.

Installation features

- The bushings are fastened to the equipment by means of clamps or flanges.
- 4 attaching tabs for locking brace of separable connector or of dead-end receptacle.
- **May only be energized once separable connector or dead-end receptacle installed.**

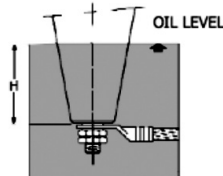
Description

- ① **Body**
Moulded in epoxy resin with electrode insert, suitable for immersion in oil.
- ② **Interface A**
Part which accepts the mating interface of a connector or of an accessory. The elastic sealing pressure prevents the ingress of moisture.
- ③ **Earthing**
The electrode insert is connected to earth by a stainless steel plate or by a stranded copper lead.
- ④ **Bushing rod**
Copper rod, with lower part threaded to allow connection to MV windings.
- ⑤ **Socket contact**
Sliding contact of multipoint type which accepts the pin of the mating item.
- ⑥ **Cap**
For mechanical protection of the interface during storage and transport.
The cap cannot be used for electrical protection
- ⑦ **Attaching tabs**
For the locking brace of the separable connector or of the dead-end receptacle.



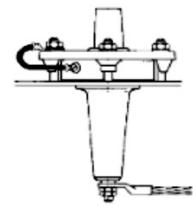
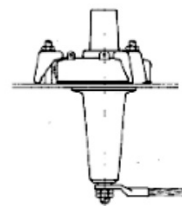
Selection guide

Minimum immersion	
Voltage	H mm
12 kV	40
24 kV	50



FASTENING SYSTEM
NF C 52 053
(CLAMP)

FASTENING SYSTEM
DIN 42538
(FLANGE)



- 1 - Select model according to insulation voltage (U_m) in kV : **12 - 24**
- 2 - Select earthing device according to bushing fastening system :
 "Q" : plate for system NF C 52-053.
 "K" : lead for system DIN 42538 or NF C 52-053.
The bushing fastening system is not supplied.

Example of order

24 kV, interface A/250 Amp., in-oil application, DIN fastening system (flange) : **FMBOm-250-24-K**.

